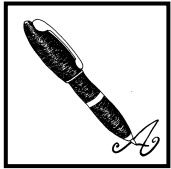


**MÁSLO**



MÁSLO

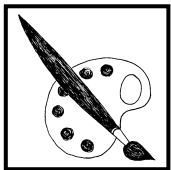
MÁSL \_

MÁS \_ \_

MÁ \_ \_ \_

M \_ \_ \_ \_

\_ \_ \_ \_ \_



**MÁSLO**



\_ \_ \_ \_ \_



# MÁSLO



TO MÁ S L O  
J E D N O / 1 / M Á S L O  
D V Ě / 2 / M Á S L A  
R O H L Í K S M Á S L E M  
M L Ě Č N Ě V Ý R O B K Y  
K O L I K S T O J Í M Á S L O



V A Ě I L A M Y Š K A K A Š I Č K U  
N A Z E L E N Ě M R E N D L Í Č K U .  
T O M U D A L A ,  
T O M U T A K Y ,  
P R O M A L Ě H O N E M Á N I C ,  
M A Ž E M Á S L O N A K R A J Í C .