

**H A D**

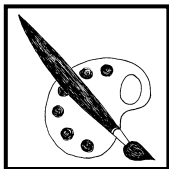


**H A D**

**H A \_**

**H \_ \_**

**\_ \_ \_**



**H A D**



**\_ \_ \_**



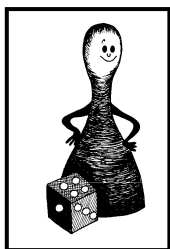
## HAD



HAD DĚLÁ SSS , SSS .  
HAD **E** !

HAD LEZE , PLAZÍ SE .  
HAD JE DLOUHÝ .

2 , 3 , 4 HADI  
5 , . . . HADŮ



HAD LEZE Z DÍRY ,  
VYSTRKUJE KNÍRY .  
BÁBA SE HO LEKLA ,  
NA KOLENA KLEKLA .  
NIC SE BÁBO NELEKEJ ,  
NA KOLENA NEKLEKEJ .  
JÁ JSEM PŘECE HODNÝ HAD ,  
JÁ MÁM VŠECHNY LIDI RÁD .